

Honeywell



The Reengineered Morning Pride[®] TAILS™ Turnout Gear

A Revolutionary Mix of Classic Design and
Modern Engineering for Today's Fire Fighter

The Reengineered Morning Pride® TAILS™ System

With extraordinary reliability comes extraordinary performance. The renowned TAILS System is the pioneer of safety by design, trusted for state-of-the-art features, versatile customization, and rock-solid protection. The first responder's first choice gets better than ever with rigorous design engineering that increases comfort, fit, and ergonomics for greater mobility and safety.

Designed by Science. Engineered with Pride.

We've rewritten the rules again. The redesigned Morning Pride TAILS system has been rebuilt and reengineered to reinforce every move you make with protection, support, and performance while maintaining all the great features that make it Morning Pride.

Our groundbreaking classic design has been further perfected by 50 years of pattern-engineering expertise for turnout gear that protects you with better fit, better weight distribution, and greater range of motion.

The result: The comfort you want. The agility you need. And the safety you depend on.

It's the science of precise design – and it's precisely why Morning Pride TAILS is the first choice of first responders.

WHY FIRST RESPONDERS PREFER THE TAILS SYSTEM:

- **Protection:** Innovative design features maximize protection and durability.
- **Endurance:** Precise fit and advanced patterning reduces reduces physical stress.
- **Agility:** Redesigned ergonomics enable unobstructed movement.
- **Comfort:** Enhanced ventilation and reduced weight improve wearability.

The Science Behind the TAILS™ System

The Morning Pride® TAILS™ system combines advanced pattern engineering with reduced weight to give you a better range of motion, increased protection, and improved ventilation. By strategically reducing excessive overlap at the front of the coat and adding length to the back, the TAILS™ system significantly improves mobility in the front and maximizes protection in the back.

Comfort Chinstraps (optional)
Curved design for better fit and less irritation

Articulating Drag Rescue Device
Adjusts to maintain equal leverage on a downed firefighter even when pulling from an angle (patented)

New Shoulder/Arm Pattern
Increased arm mobility when reaching and more even weight distribution across shoulders

Forward Flex™ Sleeve
Patented design eliminates undesirable sleeve retraction when reaching up or forward

Continuous 360° Protection
Outer shell, moisture barrier, and thermal barrier overlap at coat facings, collar linings, and pant fly to give uninterrupted protection

Large Inspection Ports
Patented feature allows for easier inspection of thermal liner and moisture barrier

Standard snap tab
Keeps shell and liner aligned

Full Access Fly
Easier donning and doffing

Full Range of Motion Crotch
Patented U-shaped design and diamond shaped insert allow greater leg mobility (patented)

Reshaped Neck/Collar
Contoured fit for more natural comfort around the neck and across the shoulders

Kinetic Kut™ Styling
Significantly reduces hem rise and sleeve retraction, allowing for greater range of motion and protection (patented)

Single Seam Sleeves
Innovative design eliminates second seam, reducing wear point

Waterproof Wristlets
Double-layer tough and durable Nomex® wristlets with continuous moisture barrier provide a liquid seal at the wrist (patented)

Hybrid Long Tabbed Wristlets
Durable and comfortable thumb locator option doesn't interfere with glove donning

Double Stitched Trim
Higher durability

Tails™ System
Reduces weight, increases range of motion and eliminates bunching when bending forward. Also increases visibility from behind and improves torso ventilation

New Liner Attachment
More robust attachment, easier to remove liner from shell

Low-waist Comfort Pant
Increases mobility at waist, reduces weight, and allows for more ventilation

- feels like a pair of jeans
- wears like a pair of jeans
- rides like a pair of jeans

Seam Guards
Placed over trim threads at high-abrasion areas on the coat and pant to reduce wear (patented)

Better Pant/Boot Interface
Easier to store pants on newer style boots



Superior Morning Pride® Features That Make All The Difference



Three-Piece Pattern Throughout All Layers Offers Unique Mobility

A true three-piece patterning design through the outer shell, moisture barrier, and thermal liner ensures all ergonomic features of the coat and pants are implemented throughout every layer of the garment, ensuring:

- Optimal mobility and performance.
- Superior reach, stride, and comfort.
- No binding or constriction.
- Reduced fatigue.



Kinetic Kut™ Styling and Forward Flex™ Design Provide Freedom of Movement

The Morning Pride coat features set-in sleeves with proportionally sized openings and built-in underarm bellows for full arm movement. This design incorporates Forward Flex to allow greater ease of motion while reducing hem rise.

The unique Kinetic Kut design provides unobstructed movement, superior thermal protection, and optimal range of motion without adding weight.



Waterproof Wristlets Keep You Dry

Our patented waterwell system starts with two double-layer Nomex® wristlets mounted directly to the moisture barrier for a continuous liquid seal.

Thanks to this exclusive, patented design, firefighters don't have to worry about contaminated water running down their sleeves from their waterwells when they raise their arms. Water is channeled outside the moisture barrier and runs out the bottom of the coat.



Continuous 360° Protection Around Gap Areas Minimizes Risk of Exposure

The Morning Pride TAILS design offers 360° protection around all openings.

Continuous front facings are constructed with same thermal and moisture barrier materials as the liner. A curved chinstrap provides enhanced neck protection and comfort. Sleeves end in double-layer wristlets with continuous waterwells to channel liquid outside the moisture barrier.



Seam Guard Reduces Wear and Prevents Snags

We stop the inboard coat and pants cuff trim 1/2" before the seam, dramatically reducing thread wear at this high-abrasion area. And to prevent this edge from folding or becoming caught on objects, we have developed a seam guard that not only covers the thread at the seam but also prevents a sharp edge in this area.



Large Liner Inspection Port Allows Easy Access for Moisture Barrier and Thermal Liner Inspection

Our liner inspection port offers the protective advantages of a combined hemming system and enables effective inspection of the thermal liner fill as well as hydrostatic testing of the moisture barrier. A new extra-large inspection port is now standard on both coat and pants.

Improved Performance and Reliability You Can Trust



Double-Felled Seams and Double Stitching Increases Durability and Strength

Major seams are double-stitched and double-felled on all three layers as well as double-stitching on the trim to increase durability and diminish the risk of fabric or seams fraying.



Chinstrap Options Designed for Comfort and Wearability

Our comfort chinstrap options provide enhanced protection while reducing neck and face irritation. The Nomex® knit material is soft and doesn't abrade, making it comfortable to wear for extended periods.



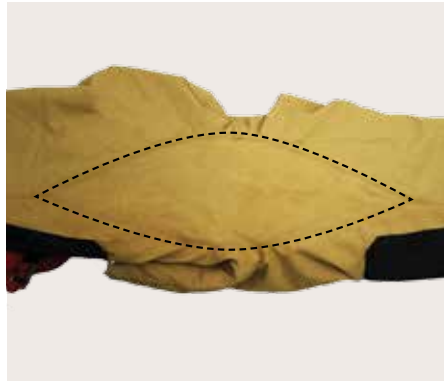
Custom Sizing for a True Tailored Fit

Stress is a major source of fireground injuries and fatalities, making a proper fit critical. All Morning Pride TAILS garments are custom-tailored to fit men and women with precise measurements in chest, sleeve length, height, waist inseam, hip, and crotch rise for a truly custom fit.



Four-layer Fabric Combination in Collars

All of our collars have the same three layers that you specify for your outer shell, moisture barrier, and thermal liner, with an extra layer of outer shell nearest the neck for consistent protection.



Full Range of Motion Crotch Allows Extra Mobility and Prevents Seam Wear

An extra panel gives our full-range-of-motion crotch four more inches of lateral range than conventional products so you don't have to worry about pants binding when you climb ladders, step up into trucks, or climb steep slopes. This extra mobility improves performance, comfort, and safety, while reducing wear and cuff rise.



Digital Asset Tracking that Puts Safety and Compliance FIRST

By tracking each asset with a simple barcode scan, Honeywell FIRST software provides precise tracking that streamlines PPE maintenance and simplifies NPFA 1851 compliance. FIRST runs on a cloud-based mobile platform, offering inventory tracking and advanced analytics for deeper insights into your PPE needs with visual reports to highlight gaps in inventory, recommended sizes and spares, and trends such as recurring maintenance hot spots.

Drag Rescue Devices

Effective Leverage for Safer Rescues

Morning Pride® TAILS offers three different DRDs with different closure and hand-hold options, all designed to evenly distribute the weight during rescue situations.

DRDs store between the coat's outer shell and lining. All are sized loose enough to give unobstructed freedom of movement, yet are virtually undetectable during firefighting. In use, the DRD slides between the shell and liner to firmly grip the upper torso of the wearer and offer better leverage to the rescuer.

Articulating DRD

The Morning Pride® patented Articulating Drag Rescue Device is unlike any other DRD on the market.

The articulating nature of this design means that both underarms are engaged when the rescuer must pull from an angle. In contrast, non-articulating designs will only pull on both underarm areas if the rescuer can make a straight pull. Engaging both sides of the downed firefighter should help minimize the chance of pulling the coat off or failing to gain effective leverage on the victim.



Positive Closure Articulating DRD

Only Morning Pride® has the unique, patented Positive Closure Articulating Drag Rescue Device.

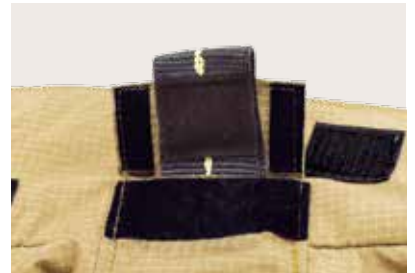
Its innovative design engages the strap to positively circle the chest as the coat closes, maintaining constant pressure on both underarms when deployed. That adds leverage and maximizes the rescuer's ability to maneuver a downed firefighter without worrying about unintentionally pulling off his/her coat.



HAND HOLD SYSTEMS

Standard Looped Hand Hold System

The Hand Hold is attached by hook and loop via a flap on the underside of the collar and is barely visible when the coat is worn.



Optional Suitcase Hand Hold System

The optional Suitcase Hand Hold System, available on the Positive Closure DRD and FDNY DRD, offers a firm grip.



High-Performance Optional Features

CERTIFIED BELTS AND HARNESSSES

UL classified to NFPA 1983, current edition. Components UL classified to NFPA 1971, current edition



Shown with external leg loops



Shown with internal leg loops

Spider™ Harness

Integrated Class II safety and rescue harness with A-frame

- Built in 2" increments for even waist sizes 32" and above
- Compatible with internal or external leg loop configs
- Integrated pant also accepts Patriot Harness and Life Grip Belt
- Extra stable A-frame stows on waist belt for bailout and ladder work
- Separate sliding D-ring on the A-frame for bailout system pre-connect

Patriot™ Harness

Integrated Class II safety and rescue harness

- Built in 2" increments for even waist sizes 32" and above
- Compatible with internal or external leg loop configurations
- Integrated pant also accepts Spider Harness and Life Grip Belt
- Separate sliding D-ring for bailout system pre-connect
- Optional tether stows at waist for use with ladder hook



Life Grip™ Ladder/ Escape Belt

Functional and fully adjustable escape belt

- Built in 2" increments for all even-waist-size bunker pants
- The most economical yet fully featured ladder/escape belt
- Separate sliding D-ring for bailout system pre-connect
- Use with integrated pant adaptation or simple belt loops
- Optional tether stows at waist for use with ladder hook



ATLAS Ladder/ Escape Belt

Functional and fully adjustable escape belt

- Built in 2" increments for all even-waist-size bunker pants
- Extra stable A-frame stows on waist belt for bailout and ladder work.
- Separate sliding D-ring for bailout system pre-connect
- Use with integrated pant adaptation or simple belt loops

**All Leg Loops, Closure and A-Frame are Intuitively Adjustable.
All Hardware is in Hot-Forged Alloy Steel for Complete Safety.**

INTEGRATED HARNESS PANT SYSTEM

Parallel engineered for seamless compatibility. Constructed of 100% DuPont Kevlar® webbing and thread

Pant With External Loops Easy to inspect, remove and install (Patriot Harness shown)



Leg Loop
Tension
Adjustment Tab

Sliding D-Ring to
Attach Tether

Velcro® Stow Tabs
for Tether and
Ladder Hook

Tabs for Externally
Mounted Leg Loops



Pant With Internal Loops Protected from UV and abrasion (Patriot Harness shown)



Leg Loop Tension
Adjustment Tab

Sliding D-Ring to
Attach Tether

Pass-through Slot
Backed Up with
Outer Shell

**DuPont™
Kevlar®.**

DuPont™ and Kevlar® are trademarks or registered trademarks of E.I. du Pont de Nemours and Company.



FEATURES

Designed To Work In Unison

1] Intuitive Leg Adjustments

Easily grab and pull to tighten and thumb the adjuster hardware to loosen (internal or external)

2] Integrated Closure

Simply zip and clip - the harness and pant closure become one. Donning and doffing remain almost unaffected, requiring only a simple learning curve.

3] Built-in Spider™ Harness A-frame

Optional ladder hook stows in A-frame when not in use. Separate sliding D-ring for escape system pre-connect.



1]



2]



3]

Closure Systems

COATS



Standard Hook & D with Hook & Pile

Exterior hooks and Ds on shield are supplemented with interior 2" (standard) hook and pile.*



Hook & Pile with Zipper

Exterior 2" wide Hook & Pile on shield supplemented by interior zipper.*



Chicago Closure

7" wide shield with exterior 2" hook and pile covering interior reverse hooks and Ds.*

*Optional 5" wide shield

PANTS



Standard Hook & Pile with Hook & D

The standard pant closure is a reverse hook and D with 1½" wide hook and pile.*



Hook & Pile with Hook & D plus Zipper

The pant closure has a reverse hook and D with a 1½" wide hook and pile tape, and the interior closure features a zipper.



Industry Leading Thermal Enhancement Technologies

DEAD AIR PANELS

Highly insulative, no weight, no movement restrictions - these are the attributes that make air insulation the ideal lining material.

The challenge for using air inclusion in bunker-clothing design has always been that the weight of auxiliary equipment (e.g., SCBAs) compresses the protective system and eliminates the dead air insulation.

These patented dead air panels are constructed of NFPA-certified thermal liner fibers, which prevent system compression and guarantee the retention of dead air insulation in the areas they are used.

Dead Air Panel Advantages

- Added protection in arm and shoulder areas
- Increased Thermal Protective Performance (TPP)
- Improved Conductive Compressive Heat Resistance (CCHR)
- Flexible
- Lightweight

These dead air panels also feature a stored energy transfer (SET) panel above the wrists for further heat dispersion and protection.

MORE THAN 2X THE NFPA MINIMUM PROTECTION REQUIREMENT



The dead air panels in Morning Pride TAILS garments use X-9 engineered thermal padding. The result? Significantly greater CCHR in critical areas, going well beyond the NFPA standard. Lightweight, highly moisture-vapor permeable, and low cost - just some of the benefits of Morning Pride TAILS' exclusive dead air panels.

Thermally Enhanced Knee Technology



Heat-channel Knee

Enhanced thermal protection in the knee area is critical. The proprietary Heat-Channel Knee offers three to four times the NFPA minimum level requirement. This provides maximized thermal and compressive protection - adding comfort and mobility with the help of a unique, flexible design.



BiFlex Heat-channel Knee

The BiFlex Heat-Channel Knee utilizes additional lateral panels for even greater flexibility - thus maximizing comfort and protection with unparalleled conductive and compressive heat resistance (CCHR). This provides five layers of protection in the primary kneeling area and reduced layering for less centered areas.



3D BiFlex Knee

With a combination of concave and convex seams, the 3D BiFlex Knee creates a three-dimensional shape that enhances mobility while making room for removable knee pads. This knee allows fire departments to provide varying levels of protection that are job specific. Waterproof knee pads are available in aramid and moisture barrier or 1/4" silicone foam padding (patent pending).

New Super-BiFlex DRY Heat Channel Knee

The newly engineered Super-BiFlex Dry Heat-Channel Knee offers even greater protection in the high-compression area around the knee. Designed to provide more cushioning while maintaining mobility, it enables protective layers to form around the wearer's knee when the leg is bent. This provides greater mobility and protection, and enables the knee to bend more easily.

Our most flexible Heat-Channel Knee, with a BiFlex design that bends and wraps plus moisture-barrier protection to keep you dry.



DuPont™
Kevlar®

DuPont™ and Kevlar® are trademarks or registered trademarks of E.I. du Pont de Nemours and Company.

Morning Pride® Proximity

QUALITY, COMFORT, AND PERFORMANCE

All the Morning Pride® TAILS™ features plus exceptional performance far surpassing radiant heat reflectivity requirements of the NFPA 1971 standard for proximity clothing



Removable / Replaceable Crotch and Seat

For firefighters who see high wear in the crotch area, we offer a removable / replaceable crotch and seat option (patent pending).



SCBA Cover

Reduces potential for radiant heat damage to valuable SCBA air tank.



Strap-on Training Knees

Protect valuable pants during crawling or kneeling while training. Available in a wide variety of materials.

For comfort and durability, non-reflective materials are standard in the following areas:

All materials are UL certified to NFPA 1971, current edition.

- Collar innermost layer: PBI/Kevlar®
- Chinstrap innermost layer: PBI/Kevlar®
- Coat and pant cuffs: PBI/Kevlar®
- Coat storm flap innermost layer: black Nomex®
- Coat inner front facings: match the garment liner
- Pant fly inner lining: matches the garment liner

DESIGNED FOR MAXIMUM THERMAL PROTECTION...
ENGINEERED FOR MINIMUM RESISTANCE TO MOVEMENT

Options

FULL RANGE OF CUSTOM OPTIONS
DESIGNED TO MEET YOUR REQUIREMENTS



Chinstraps



LTO comfort chinstrap

Foldover comfort chinstrap

Wristlets



Hybrid long tabbed wristlet

Long tabbed wristlet

Thumbhole wristlet

Cuffs



Shingle cuffs

Reinforced coat cuffs

Reinforced pant cuffs

Escape Pockets



Universal escape pocket
9" x 9" x 2"

Complete escape pocket
10" x 10" x 2 1/2"

Pockets



EZ grip flap

Pleated patch pocket with handwarmer
9" x 8 1/2"

FDNY semi bellows pocket
7" x 12" x 3 1/2"

Full bellows pocket
9" x 9" x 1 1/2"

Half-height bellows pocket
6" x 9" x 1 1/2"

Handwarmer on or behind coat pocket



Internal hand-warmer pocket
8 1/2" x 10"

Radio pocket
8" x 3" x 2" standard

Multi-tool pocket

Air mask pocket

Contoured pant pocket

Bandolero pocket

Options

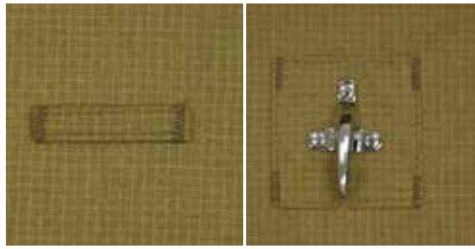
Pockets



Undershield pocket

Fleece liner on both sides (available on semi bellows or bellows pockets)

Hooks and Straps



Microphone tabs

Large hook on a patch

Hooks and Straps



Large hook on a patch with Velcro strap

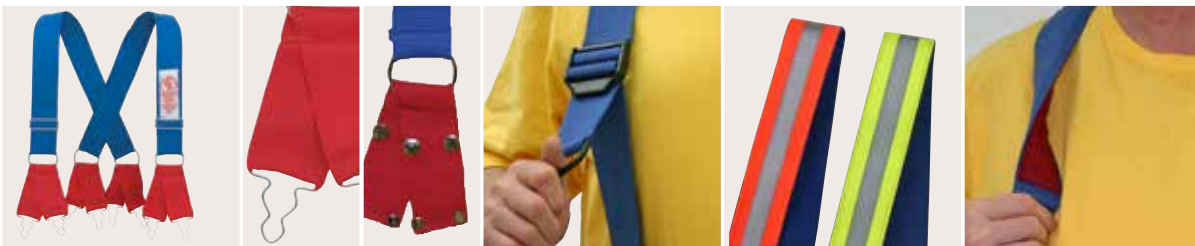
SL-90 flashlight holder

Flashlight clip

Lanyard flashlight clip style 1

Lanyard flashlight clip style 2

Suspenders



Dyna-Fit

Specify metal hooks or upender snaps (patented)

Add quick-adjust mechanism

Add two-tone reflective 3M™ Scotchlite™ trim

Add shoulder padding

Pant Options



Angled cuffs

Pant waterwells

Boot access panels

Take-up Straps



Take-up straps: postman slide

Belts



Quick-attach belt

Trim And Lettering Options

Trim Material



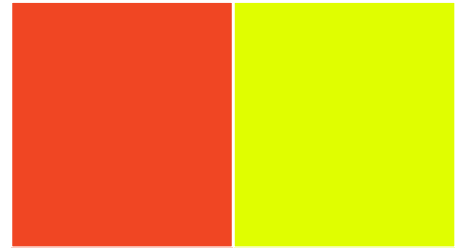
3" two-tone
Reflexite® Brilliance



3" and 2" Reflexite®
Brilliance



3" orange or lime two-tone
3M™ Scotchlite™



3" and 2" solid orange or lime
3M™ Scotchlite™

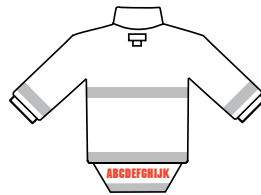
Back Patches



Arched back patch



Square back patch



Name patch

Lettering



2" or 3" sewn-on 3M™ Scotchlite™ solid orange, lime or silver. 2" or 3" heat-set 3M™ Scotchlite™ solid orange or lime. 2" or 3" sewn-on Reflexite® solid lime and orange or Reflexite® Brilliance.

NFPA Trim Configurations

NFPA – 2" or 3"



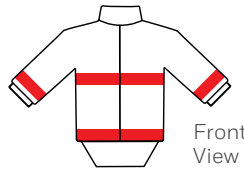
Front View



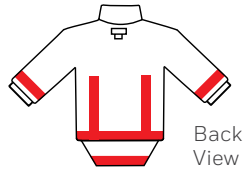
Back View

Chest/back, sleeves,
and hem

NFPA Hi-viz – 2" or 3"



Front View



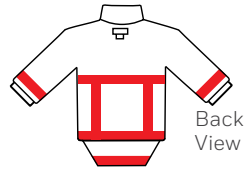
Back View

Chest/back, sleeves,
and hem

NFPA Combo – 2" or 3"



Front View



Back View

Chest/back, sleeves,
and hem

Custom Lettering and Patches



Custom trim and lettering are available on a special-quote basis.

New York Trim Configurations

New York – 2" or 3"



Front View



Back View

Chest/back, upper arms,
cuffs, and hem

New York Hi-viz – 2" or 3"



Front View



Back View

Chest/back, upper arms,
cuffs, and hem

New York Combo – 2" or 3"



Front View



Back View

Chest/back, upper arms,
cuffs, and hem

Split Cuff – 2" or 3"



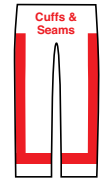
Front View



Back View

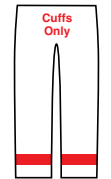
Chest/back, upper arms,
cuffs, and hem

Pant – 3"



Front/Back View

Pant – 2" or 3"



Front/Back View

THE TRUSTED CHOICE FOR SUPERIOR CUSTOMIZATION, HIGH-PERFORMANCE
FEATURES, AND ROCK-SOLID PROTECTION



Exclusive Corporate Sponsor



Honeywell is proud to be the exclusive corporate sponsor of the United States Fire Administration/National Fallen Firefighter Foundation's National Fire Service Vulnerability Assessment Project

Proudly Supporting



IAFC
International Association of Fire Chiefs



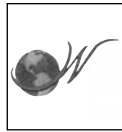
The IAFF
Fire Fighters Burn Foundation



Firefighter Cancer Support Network



International Association of Black Professional Fire Fighters



International Association of Women in Fire & Emergency Services



NFFF
National Fallen Firefighters Foundation



NVFC
National Volunteer Fire Council



FDSOA
Fire Department Safety Officers Association



Congressional Fire Services Institute



ISFSI
International Society of Fire Service Instructors



NFPA
National Fire Protection Association



FEMSA
Fire Equipment Manufacturers & Suppliers Association

DuPont™ Nomex® and Kevlar® are trademarks or registered trademarks of E.I. du Pont de Nemours and Company.

Honeywell Industrial Safety

Honeywell First Responder Products
#1 Innovation Court
Dayton, Ohio 45414
Tel: 800-688-6148
www.HoneywellFirstResponder.com

HSPRSP.244 06/16

© 2017 Honeywell International Inc.

Honeywell