



**FIRE & SAFETY**
EQUIPMENT COMPANY

5.11 

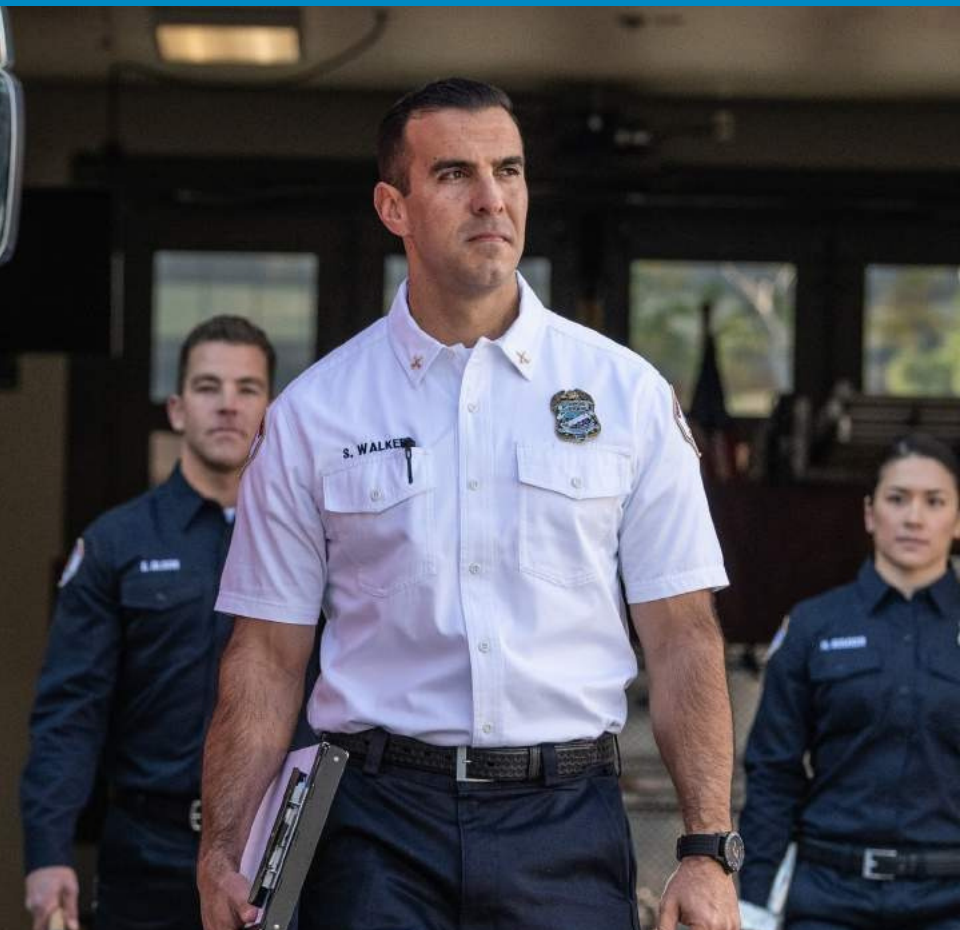
**FIRE & EMS UNIFORM
SOLUTIONS**





For more than 20 years, 5.11 Tactical has focused on crafting solutions for our end users' real-world challenges. From station wear, to mission-ready packs and bags and onto everyday apparel, 5.11® is dedicated to a relentless pursuit of innovation.

We build these solutions for end users around the world and for agencies small and large. What challenges can we help solve with you next?



*We are global innovators who make
purpose-built technical apparel,
footwear, and gear for life's most
demanding missions.*

5.11 



CERTIFIED
NFPA 1975
(2019 Edition)

COMPANY SHIRTS

READY FOR YOUR NEXT SHIFT

- + NFPA 1975 (2019) Certified
- + Firefly™ thread construction
- + 100% cotton twill with easy care, wrinkle-resistant finish
- + Badge tab and epaulette kit included

71391 Company Shirt, Short Sleeve | White 010, Fire Medium Blue 696, Fire Navy 720 | S-3XL, 71391T L-5XL Tall

72515 Company Shirt, Long Sleeve | White 010, Fire Medium Blue 696, Fire Navy 720 | S-3XL, 72515T L-5XL Tall

61321 Women's Company Shirt, Short Sleeve | White 010, Fire Medium Blue 696, Fire Navy 720 | XS-2XL

62399 Women's Company Shirt, Long Sleeve | White 010, Fire Medium Blue 696, Fire Navy 720 | XS-2XL

WHITE 010

MEDIUM BLUE 696

FIRE NAVY 720



CERTIFIED
NFPA 1975
 (2019 Edition)

COMPANY PANTS



PROFESSIONAL GRADE AND STATION READY

- + NFPA 1975 (2019) Certified
- + YKK® Nomex® zipper, Firefly™ thread construction
- + 100% cotton twill with Tough Cotton™ finish
- + Self-adjusting tunnel waistband with gripper material

74508 Company Pant 2.0 | Fire Navy 720 | 28-44 even waist, unhemmed; 46-54 even waist, unhemmed

74509 Company Cargo Pant 2.0 | Fire Navy 720 | 28-44 even waist, unhemmed; 46-54 even waist, unhemmed

64435 Women's Company Pant 2.0 | Fire Navy 720 | 2-20 even waist, unhemmed

64436 Women's Company Cargo Pant 2.0 | Fire Navy 720 | 2-20 even waist, unhemmed

FIRE NAVY 720

5.11 

FIRE
UNIFORM
SOLUTIONS

&
EMS



5.11 STRYKE® EMS PANTS

MISSION READY PERFORMANCE

- + Flex-Tac® stretch ripstop with DWR finish
- + Comfort waistband with stretch panels and gripper material +
- Double-layered knees are kneepad compatible
- + 19 pockets

74482ABR 5.11 Stryke® EMS Pant | Black 019, Dark Navy 724 | 28-44 even waist, 30-36 even inseams; 46-54 even waist, unhemmed

64418ABR Women's 5.11 Stryke® EMS Pant | Black 019, Dark Navy 724 | 2-20 even, Regular (31") and Long (35") inseams

BLACK 019

DARK NAVY 724

 STRETCH



5.11 

FIRE &
UNIFORM
SOLUTIONS

EMS



TACLITE® EMS PANTS

MISSION-READY LIGHTWEIGHT PERFORMANCE

- + Hardwearing poly/cotton Taclite® ripstop
- + Self-adjusting waistband with double-time belt loops
- + Double-layered knees are kneepad compatible
- + 19 pockets

74363ABR Taclite® EMS Pant | Black 019, Dark Navy 724 | 28-44 even waist, 30-36 even inseams; 46-54 even waist, unhemmed

64369ABR Women's Taclite® EMS Pant | Black 019, Dark Navy 724 | 2-20 even, Regular (31") and Long (35") inseams

73309ABR Taclite® EMS Short (11") | Dark Navy 724 | 28-54 even waist, 11" inseam

BLACK 019

DARK NAVY 724



EMS PANTS

MISSION READY PERFORMANCE

- + Hardwearing poly/cotton twill fabric
- + 19 pockets
- + Self-adjusting waistband with double-time belt loops
- + Double-layered knees are kneepad compatible

74310 EMS Pant | Black 019, Dark Navy 724 | 28-44 even waist, 30-36 even inseams; 46-54 even waist, unhemmed

64301 Women's EMS Pant | Black 019, Dark Navy 724 | 2-20 even, Regular (31") and Long (35") inseams

BLACK 019

DARK NAVY 724



5.11 STRYKE® FLEX-TAC® PDU® SHIRTS

- + Available in Men's and Women's styles in Class A and B + Flex-Tac® stretch poly/cotton twill with DWR finish
- + Home laundry, wash and wear ease



Shirts:

- + Zippered front placket with faux buttons
- + Dual chest pockets with scallop pocket flaps, pen guides, permanent creases
- + B Class adds 5.11 ReadyPocket™ to left and right chest
- + 78% polyester/ 22% cotton mechanical stretch Flex-Tac twill, 5.8-oz., DWR finish



HOME LAUNDRY



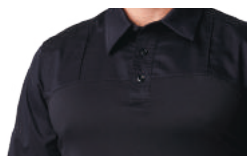
STRETCH



Class A has standard front-chest patch pockets with chevron pocket flaps



Class B has our ReadyPocket™ at left and right chest, plus patch pockets with chevron pocket flaps



Rapid Shirts feature a hybrid woven and knit fabric construction for comfortable wear under an outer plate carrier

71405ABR 5.11 Stryke PDU, Class A Shirt, Short Sleeve | Black 019, French Blue 686, Midnight Navy, 750, Uniform White 992 | S-L Short, S-2XL Regular, L-6XL Tall

72546ABR 5.11 Stryke PDU, Class A Shirt, Long Sleeve | Black 019, French Blue 686, Midnight Navy, 750, Uniform White 992 | S-L Short, S-2XL Regular, L-6XL Tall

71407ABR 5.11 Stryke PDU, Class B Shirt, Short Sleeve | Black 019, Midnight Navy 750 | S-L Short, S-2XL Regular, L-6XL Tall

72549ABR 5.11 Stryke PDU, Class B Shirt, Long Sleeve | Black 019, Midnight Navy 750 | S-L Short, S-2XL Regular, L-6XL Tall

61339ABR Women's 5.11 Stryke PDU, Class A Shirt, Short Sleeve | Black 019, French Blue 686, Midnight Navy, 750, Uniform White 992 | XS-XL Regular, M-XL Tall

62422ABR Women's 5.11 Stryke PDU, Class A Shirt, Long Sleeve | Black 019, French Blue 686, Midnight Navy, 750, Uniform White 992 | XS-XL Regular, M-XL Tall

61341ABR Women's 5.11 Stryke PDU, Class B Shirt, Short Sleeve | Black 019, Midnight Navy 750 | XS-XL Regular, M-XL Tall

62425ABR Women's 5.11 Stryke PDU, Class B Shirt, Long Sleeve | Black 019, Midnight Navy 750 | XS-XL Regular, M-XL Tall

BLACK 019

FRENCH BLUE 686

MIDNIGHT NAVY 750

SHERIFF TAN 952

UNIFORM WHITE 992



5.11 STRYKE® FLEX-TAC® PDU® PANTS

- + Available in Men's and Women's styles in Class A and B + Flex-Tac® stretch poly/cotton twill with DWR finish
- + Home laundry, wash and wear ease



Pants:

- + Self-adjusting tunnel waistband with shirt gripper panel
- + Class A Plus has low-profile cargo pocket, Class B has large cargo pockets
- + 81% polyester/ 19% cotton mechanical stretch Flex-Tac® twill, 7.3-oz., DWR finish

 HOME LAUNDRY

 STRETCH



Class A has hidden on-seam vertical thigh pockets



Class A Plus has low-profile zippered thigh pocket



Class B has large main cargo pockets with internal bellows plus hidden zippered pocket behind flap

74550ABR 5.11 Stryke PDU, Class A Pant | Black 019, Midnight Navy 750, Sheriff Green 890 | 30, 31, 32, 33, 34, 35, 36-60 even sizes, unhemmed

74545ABR 5.11 Stryke PDU, Class A Plus Pant | Black 019, Midnight Navy 750, Sheriff Green 890 | 30, 31, 32, 33, 34, 35, 36-60 even sizes, unhemmed

74551ABR 5.11 Stryke PDU, Class B Pant | Black 019, Midnight Navy 750, Sheriff Green 890 | 30, 31, 32, 33, 34, 35, 36-60 even sizes, unhemmed

64471ABR Women's 5.11 Stryke PDU, Class A Pant | Black 019, Midnight Navy 750, Sheriff Green 890 | 2-20 even sizes, unhemmed

64468ABR Women's 5.11 Stryke PDU, Class A Plus Pant | Black 019, Midnight Navy 750, Sheriff Green 890 | 2-20 even sizes, unhemmed

64472ABR Women's 5.11 Stryke PDU, Class B Pant | Black 019, Midnight Navy 750, Sheriff Green 890 | 2-20 even sizes, unhemmed

BLACK 019

MIDNIGHT NAVY 750

SHERIFF GREEN 890





PROFESSIONAL POLOS

COTTON COMFORT WITH FADE-RESISTANCE

- + 100% cotton pique knit
- + Stay-flat, no-roll collar
- + Pen pockets on left sleeve
- + Available in long and short sleeve in men's and women's

41060 Professional Polo, Short Sleeve | White 010, Heather Grey 016, Black 019, Silver Tan 160, Range Red 477, Academy Blue 692, Fire Medium Blue 696, Dark Navy 724 | XS-3XL, 41060T L-5XL Tall

42056 Professional Polo, Long Sleeve | White 010, Heather Grey 016, Black 019, Silver Tan 160, Range Red 477, Academy Blue 692, Dark Navy 724 | XS-3XL, 42056T L-5XL Tall

61166 Women's Professional Polo, Short Sleeve | White 010, Heather Grey 016, Black 019, Silver Tan 160, Range Red 477, Dark Navy 724 | S-XL

WHITE 010

HEATHER GREY 016

BLACK 019

SILVER TAN 160

RANGE RED 477

ACADEMY BLUE 692

MEDIUM BLUE 696

DARK NAVY 724

L.E. GREEN 860

 MOISTURE WICKING

 ANTI-ODOR



PERFORMANCE POLOS

COLORFAST AND SNAG-RESISTANT POLOS

+ 100% polyester jersey knit

+ Wrinkle and snag-resistant with moisture-wicking and odor-control

+ Mic loops at shoulders and front placket, pen pockets on left sleeve +

Available in long and short sleeve in men's and women's

71049 Performance Polo, Short Sleeve | White 010, Charcoal 018, Black 019, Storm 092, Silver Tan 160, TDU Green 190, Range Red 477, Dark Navy 724 | XS-3XL, 71049T L-5XL Tall

72049 Performance Polo, Long Sleeve | Charcoal 018, Black 019, Storm 092, Silver Tan 160, TDU Green 190, Range Red 477, Dark Navy 724 | S-3XL, 72049T L-5XL Tall

61165 Women's Performance Polo, Short Sleeve | White 010, Charcoal 018, Black 019, Storm 092, Silver Tan 160, TDU Green 190, Range Red 477, Dark Navy 724 | XS-XL

62408 Women's Performance Polo, Long Sleeve | Black 019, Charcoal 018, Storm 092, Silver Tan 160, TDU Green 190, Dark Navy 724 | XS-XL

WHITE 010

CHARCOAL 018

BLACK 019

SILVER TAN 160

TDU GREEN 190

RANGE RED 477

DARK NAVY 724

L.E. GREEN 860

5.11



FIRE & UNIFORM SOLUTIONS

EMS

 MOISTURE WICKING

 ANTI-ODOR



HELIOS POLOS

PROFESSIONAL-GRADE POLO WITH SNAG RESISTANT FABRIC

- + Lightweight Enduro-Flex™ polyester jersey knit
- + Moisture wicking, anti-odor and snag-resistant performance
- + Integrated mic loops at shoulder and sternum
- + Embroidery friendly pen pockets on left sleeve

41192 Helios Polo, Short Sleeve | Black 019, Heather Grey 016, Charcoal 018, Silver Tan 160, Academy Blue 692, Fire Medium Blue 696, Dark Navy 724 | S-3XL, 41192T L-5XL Tall

42022 Helios Polo, Long Sleeve | Black 019, Charcoal 018, Silver Tan 160, TDU Green 190, Dark Navy 724 | XS-5XL, 42022T XS-5XL Tall

61305 Women's Helios Polo, Short Sleeve | Black 019, Charcoal 018, Silver Tan 160, Dark Navy 724 | S-XL

32013 Women's Helios Polo, Long Sleeve | Black 019, Charcoal 018, Silver Tan 160, TDU Green 190, Dark Navy 724 | XS-2XL, 1X-3X

HEATHER GREY 016

CHARCOAL 018

BLACK 019

SILVER TAN 160

ACADEMY BLUE 692

MEDIUM BLUE 696

DARK NAVY 724

 MOISTURE WICKING

 ANTI-ODOR



BIKE PATROL POLO

BE SEEN, BE SAFE

- + Integrated reflective trim and color-contrast pattern
- + Moisture wicking, quick drying, and anti-odor properties
- + Colorfast to light & perspiration
- + Longer cut to help stay tucked in

71322 Bike Patrol Polo | High Vis Yellow 320, Royal Blue 693 | XS-3XL



HIGH VIS YELLOW 320



ROYAL BLUE 693



Enduro-Flex fabric provides four-way stretch and outstanding abrasion resistance. Its fibers have been engineered to prevent snags and pilling. Enduro-Flex is available in knit and woven fabrics - only from 5.11.

 **MOISTURE WICKING**

 **ANTI-ODOR**



PERFORMANCE UTILI-TS

PREMIUM-GRADE TEES WITH SNAG RESISTANT FABRIC

- + Snagging, abrasion and pilling resistant Enduro-Flex™ fabric
- + Tagless main label for comfort
- + Moisture wicking and anti-odor properties
- + 2 pack

40174 Performance Utili-T Short Sleeve | White 010, Black 019, Dark Navy 724 | S-

3XL **40175 Performance Utili-T Long Sleeve** | White 010, Black 019, Dark Navy 724 |

S-3XL
WHITE 010

BLACK 019

DARK NAVY 724

 **MOISTURE WICKING**



PROFESSIONAL TS

100% COTTON TEE WITH MOISTURE WICKING

- + Fade, shrink & wrinkle resistant
- + No-roll rib collar
- + Cut long to help stay tucked in

71309 Professional T Short Sleeve | Fire Navy 720 | XS-3XL

71307 Professional T Short Sleeve w/ pocket | Fire Navy 720 | XS-

3XL **72318 Professional T Long Sleeve w/ pocket** | Fire Navy 720 |

XS-3XL

FIRE NAVY 720

 MOISTURE WICKING

STATION TS

MEDIUM-WEIGHT COTTON TEE WITH STRETCH COLLAR

- + Extra-long, tapered fit to help stay tucked in
- + Moisture wicking performance
- + 1" no-roll high-density collar with elastane

40050 Station Short Sleeve T | Heather Grey 016, Range Red 477, Fire Navy 720 | S-

3XL **40052 Station Long Sleeve T** | Heather Grey 016, Fire Navy 720 | S-3XL



FAST-TAC® UNIFORM HAT

- + 100% polyester Fast-Tac® ripstop, 4.6-oz, water resistant finish
- + 6 panel design, adjustable

89098ABR Fast Tac Cap | Black 019, Ranger Green 186, TDU Green 190, Dark Navy 724
| One Size

 MOISTURE WICKING



UTILI-TS

EVERYDAY T-SHIRT IN A 3 PACK

- + 100% cotton with moisture wicking performance
- + 1" no-roll collar
- + Tagless design for comfort

40016 Utili-T Short Sleeve | White 010, Black 019, Dark Navy 724 | S-

3XL **40046 Utili-T Long Sleeve** | Dark Navy 724 | S-3XL



UNIFORM HAT

- + 65 polyester/35% cotton twill, 5.7-oz., DWR finish
- + 6 panel design, adjustable

89260ABR Uniform Cap | Black 019, TDU Green 190, Dark Navy 724 | One Size



JOB SHIRTS

- + Medium-weight cotton/poly fleece with fade-resistance
- + Right chest Break-Through™ pocket
- + Hand pockets, left sleeve pen pocket
- + 1/4" zip, canvas collar/elbows or water-repellent options

72534ABR Job Shirt 2.0 | Heather Grey 016, Black 019, Fire Navy 720 | XS-3XL Regular, 72534T M-5XL Tall

72535ABR Job Shirt 2.0 with Canvas | Fire Navy 720 | XS-3XL Regular, 72535T M-5XL Tall

72537ABR Job Shirt 2.0 Water Resistant | Fire Navy 720 | XS-3XL Regular, 72537T M-5XL Tall

BLACK 019

HEATHER GREY 019

FIRE NAVY 720



Zipper with chin guard



Pen pocket on left shoulder

72534ABR Job Shirt 2.0 | Heather Grey 016, Black 019, Fire Navy 720 | XS-3XL Regular, 72534T M-5XL Tall



Traditional collar with zipper



Pen pocket on left shoulder

72535ABR Job Shirt 2.0 with Canvas | Fire Navy 720 | XS-3XL Regular, 72535T M-5XL Tall



Water-Repellent Job Shirt 2.0 features Storm Cotton™ fabric which offers protection from light rain showers.

72537ABR Job Shirt 2.0 Water Resistant | Fire Navy 720 | XS-3XL Regular, 72537T M-5XL Tall

5.11[®] 

FIRE
UNIFORM
SOLUTIONS

&

EMS



5.11[®] STATION JACKET

 **PRIMALOFT.**

INSULATED BOMBER DESIGNED FOR DAILY WEAR

- + Quilted lightweight bomber jacket
- + PrimaLoft[®] Silver insulation
- + Water-resistant finish
- + Hand zipper pockets

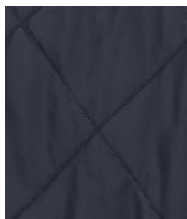
48392 Station Jacket | Black 019, Fire Navy 720 | S-2XL

BLACK 019

FIRE NAVY 720



Handwarmer pockets



Quilted design with PrimaLoft[®]
Silver Insulation

 **READYPOCKET™**



TACTICAL FLEECE 2.0

PROFESSIONAL GRADE PERFORMANCE FLEECE

- + Medium weight anti-pilling polyester tech fleece with water-resistant nylon overlays
- + Front chest ReadyPockets, hand pockets
- + Side seam zippers for ventilation and access
- + Compatible with our 3-in-1 system

78026ABR Tactical Fleece 2.0 | Black 019, Fire Navy 720 | XS-4XL, 78026T M-2XL Tall

BLACK 019

RANGE RED 477

ROYAL BLUE 693

DARK NAVY 724



Dual ReadyPocket™



Inside chest pocket.



Quixip™ side zipper for access and ventilation.

 READY POCKET™ BBP RESISTANT TAC DRY
WATERPROOF + BREATHABLE

RESPONDER PARKA™ 2.0

 **Scotchlite™**
Reflective Material


BUILT FOR DUTY WITH FUNCTIONALITY AND DURABILITY

- + Tac Dry® 10K/10K waterproof/breathable/BBP resistant, seam sealed 2L hardshell parka
- + Rollaway adjustable hood stows in collar
- + 3M® Scotchlite reflective tape, anti-slip fabric shoulders
- + Compatible with 5.11® Tactical Fleece 2.0 Jacket

48378ABR Responder Parka 2.0 | Black 019, Dark Navy 724 | XS-4XL Reg, 48378T M-2XL Tall

BLACK 019

DARK NAVY 724

 READYPOCKET™

 BBP RESISTANT

TAC DRY
WATERPROOF + BREATHABLE



RESPONDER HI-VIS PARKA™ 2.0

3M | **Scotchlite™**
Reflective Material

BUILT FOR VISIBILITY AND DUTY-READY PERFORMANCE

- + Tac Dry® 10K/10K waterproof/breathable/BBP resistant, seam sealed 2L hardshell parka
- + Rollaway adjustable hood stows in collar
- + Certified to ANSI/ISEA 107-2020 type R&P, class 2
- + Compatible with 5.11® Tactical Fleece 2.0 Jacket

48379ABR High Vis Responder 2.0 | Range Red 477, Royal Blue 693, Dark Navy 724
| XS-4XL Reg, 48379T M-2XL Tall

RANGE RED 477

ROYAL BLUE 693

DARK NAVY 724

*Visit www.511Tactical.com/product-safety-usage-information for our full disclosure on BBP (blood-borne pathogen) resistant items.

511TACTICAL.COM



A.T.A.C.® 2.0 8" & 6"

LIGHTER, FASTER AND PERFORMANCE-PACKED

- + Full grain leather toe and 840D nylon upper
- + Full-length YKK® side zip
- + ASTM Slip- and oil-resistant outsole
- + Ortholite® Achilles cuff for comfort

12391ABR A.T.A.C. 2.0 8" SZ | Black 019 | Regular: 4, 5, 6-12, 13, 14, 15; Wide: 7-12, 13,

14 **12403ABR Women's A.T.A.C. 2.0 8" SZ** | Black 019 | 5-10

12394ABR A.T.A.C. 2.0 6" SZ | Black 019 | Regular: 4, 5, 6-12, 13, 14, 15; Wide: 7-12, 13,

14 **12404ABR Women's A.T.A.C. 2.0 6" SZ** | Black 019 | 5-10

Ortholite®





A.T.A.C.® 2.0 8" STORM

WEATHER READY, WATERPROOF BREATHABLE BOOT

- + 5.11 SlipStream™ waterproof/breathable BBP membrane + Full grain leather toe and 840D nylon upper
- + ASTM Slip- and oil-resistant outsole
- + Ortholite® Achilles cuff for comfort

12392ABR A.T.A.C. 2.0 8" Storm | Black 019 | Regular: 4, 5, 6-12, 13, 14, 15; Wide: 7-12, 13, 14

12406ABR Women's A.T.A.C. 2.0 8" Storm | Black 019 | 5-10



BBP RESISTANT



SlipStream™ is 5.11's proprietary waterproof breathable membrane used primarily in footwear. It provides a barrier against blood borne pathogens as well as the added benefit of a low-friction lining for all-day comfort in addition to odor-control.*

**Visit www.511Tactical.com/product-safety-usage-information for our full disclosure on BBP (blood-borne pathogen) resistant items.*

5.11 

FIRE
UNIFORM
SOLUTIONS

&
EMS



COMPANY 3.0 BOOTS

EASY TO DON AND DOFF, ALL-DAY COMFORT

- + Slip-on water resistant full grain leather upper with nylon slip-on collar
- + Oil and slip-resistant outsole
- + Force Foam® cushioning
- + OrthoLite® logo
- + Available with Carbon Tac ASTM-F2413-17 M I/75 C/75 EH + PR certified safety toe (12421)

12420 Company 3.0 Boot | Black 019 | Regular: 4, 5, 6-12, 13, 14; Wide: 7-12, 13

12421 Company 3.0 CST Safety Toe Boot | Black 019 | Regular: 4, 5, 6-12, 13, 14; Wide: 7-12, 13

OrthoLite®



SAFETY TOE



A.T.A.C.® 2.0 LOW

LIGHTER, FASTER AND PERFORMANCE-PACKED SHOE

- + Full grain leather toe and 840D nylon upper
- + ASTM Slip- and oil-resistant outsole
- + OrthoLite® Achilles cuff for comfort

12466 A.T.A.C.® 2.0 LOW | Black 019 | Regular: 4, 5, 6-12, 13, 14, 15; Wide: 7-12, 13

OrthoLite®



5.11® DUTY OXFORD HI GLOSS

PRESENTATION-READY POLISHABLE SHOE

- + High shine, patent leather upper
- + OrthoLite® insole
- + Vibram® rubber outsole

12468 5.11® Hi-Gloss Duty Oxford | Black 019 | Regular: 4, 5, 6-12, 13, 14, 15; Wide: 7-12, 13

OrthoLite®



RESPONDER72 BACKPACK

ENGINEERED FOR EMS AND FIRST RESPONDERS (50L)

- + Fully customizable, padded inner compartment
- + Multiple carry options for O2 cylinders
- + Aluminum frame, back board, and padded shoulder straps
- + 5 color snap system for compartment identification (red, blue, yellow, green, black)
- + Wipe-down friendly exterior

56717ABR Responder 72 Backpack | Black 019, Fire Red 474, Olympian 758 | 50L Capacity



Color-coded buttons can be moved from zipper pulls



TPU coated exterior fabric for wiper blade cleanup



O2 tank is accessible from the top.



Front compartment with clear pocket, zippered slip pockets and elastic webbing



RESPONDER48 BACKPACK

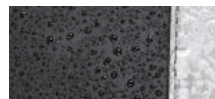
PURPOSE BUILT EMS BACKPACK (35L)

- + Fully customizable, padded inner compartment
- + External non-slip quick release straps (D size O2 cylinder sized) + Aluminum frame and HDPE board back panel
- + 5 color snap system for compartment identification (red, blue, yellow, green, black)
- + Wipe-down friendly exterior

56718ABR Responder 48 Backpack | Black 019, Fire Red 474, Olympian 758 | 35L Capacity



Color-coded buttons can be move from zipper pulls



TPU coated wipe-down exterior fabric for cleanup

RESPONDER MED POUCH

- + Full wipe-down friendly exterior
- + Reinforced closed-cell foam panel construction
- + 6x1 loop section for nametape/tag

56749ABR Responder Med Pouch | Black 019 | 3L Capacity





UCR SLINGPACK

SLING PACK WITH PREPAREDNESS AND EASE-OF DEPLOYMENT

- + Padded main compartment with 2 adjustable dividers, bungee compression and loop panels
- + Drop opening with mesh pockets and magnet closure
- + External top and rear pockets, rear compartment with elastic bands +
- Sized to carry hemorrhage control supplies for up to 4 blow-out kits

56298ABR UCR Slingpack | Black 019 | 14L





RED 8100 BAG

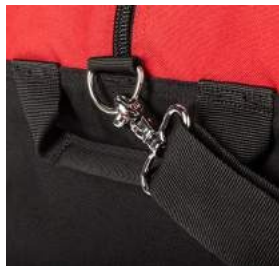
BIG CAPACITY, BUILT FOR DURABILITY (134L)

- + Durable 1050D nylon with water resistance
- + Light colored interior with inner pocket
- + Heavy duty grab and go handles
- + Patch platform, WriteBar™ and ID window

56878ABR Red 8100 Duffel | Fire Red 474 | 134L



8192 cubic inches / 134 Liters, main compartment measures 32" x 16" x 19"



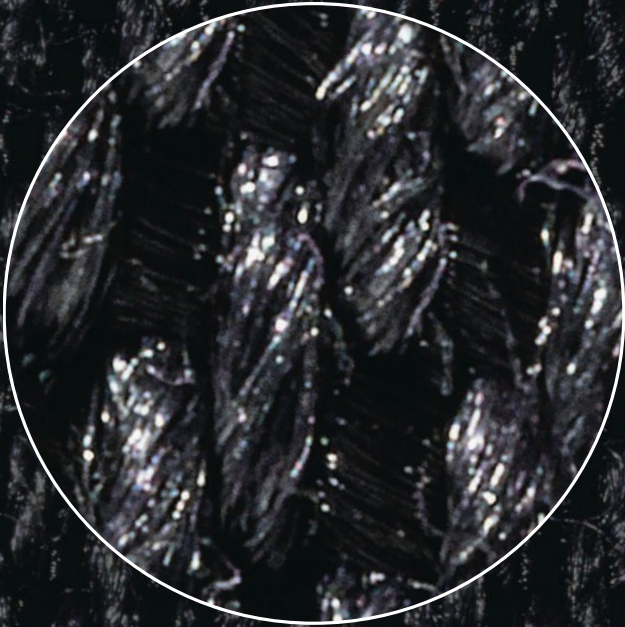


DETAILS MATTER

Starting with the fibers are used to create the thread that is then woven into fabric, we are vigilant about the small things being right.

Every thread and every stitch, 5.11[®] uniforms are crafted from the beginning to provide solutions from everyday to extraordinary problems.

Coast to coast (and beyond) we offer apparel and gear engineered to perform.



5.11'S FABRIC INNOVATIONS

Flex-Tac® fabrics are laundry friendly and made with a blend of polyester and cotton fibers. The poly/cotton mix is adjusted to provide the best blend of durability and color fastness from the polyester with comfort and appearance from the cotton. With mechanical stretch built into the threads, Flex-Tac fabrics let you move easier.

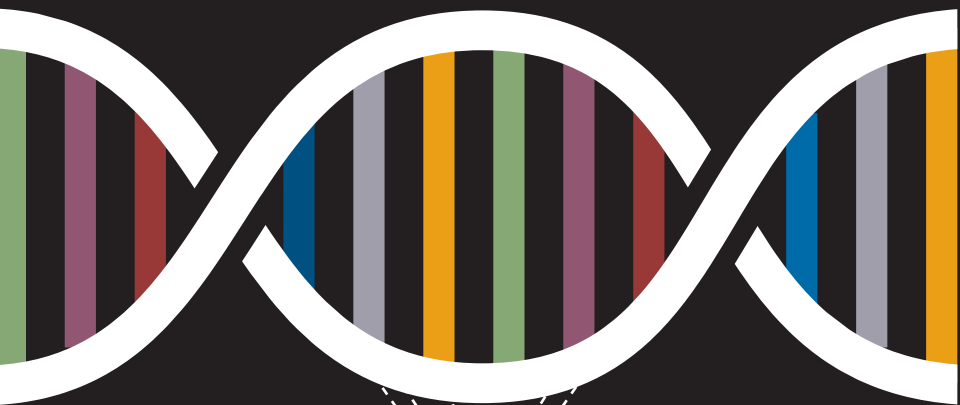
Fast-Tac® fabrics are available in a selection of 5.11 products designed with long-term durability, lightweight comfort and value in mind. Fast-Tac® fabrics are home laundry friendly and made with 100% polyester in lightweight ripstop and twill weaves. The polyester fibers offer exceptional durability and color fastness in a lightweight fabric.



Mechanical Stretch:

Weft (horizontal) fibers are engineered like a spring, which provides lasting mechanical stretch without the use of elastic which can lose its stretch over time and wear. 5.11's Flex-Tac® fabric uses mechanical stretch.

5.11[®] PRODUCT DNA



COMFORTABLE

The importance we put on comfort enables individuals to focus on the task at hand.

DURABLE

Our products are built to last, able to handle the elements and endure the most rigorous situations.

QUALITY

Pride in every stitch sewn and decision made. We focus on the small details to ensure the best quality products.

PURPOSE

We create everything for a specific reason and to fulfill a need.

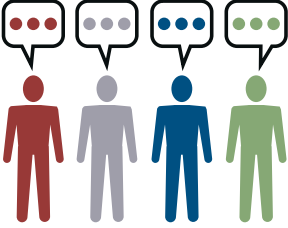
DESIGN

We not only deliver on usability, we ensure our designs are aesthetically pleasing to take you through your day.

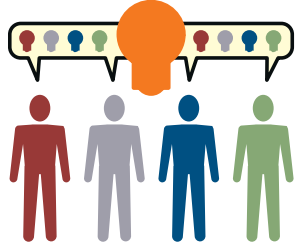
INNOVATIVE

Every day your demands change, which is why we use the latest technologies to ensure top performance.

PRODUCT DEVELOPMENT



1: End-users present problem set(s).



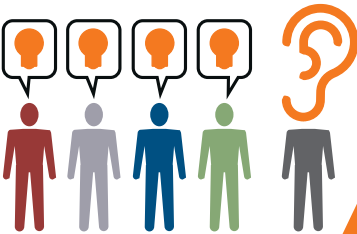
2: Collaborative exploration of solutions results in new 5.11 IP.



3: 5.11 teams design, engineer and develop prototypes.



4: End-users field-test prototypes and provide real-world feedback.



5: 5.11 teams integrate feedback then refine and launch product.



REPEAT

SIZE CHARTS

MEN'S TOPS

Alpha Size	XSSM				L	
Neck	13-13.5 14-14.5 15-15.5				16 -16	
Chest	30-32 34-36 38-40				.5 42-	
Mid Torso (natural waist)	22-24 26-28 30-32				44 34-	
Arm Length*	32.25-32.5 33-33.5 33.75-34.25				36	

Regular = 5'8"-6'½"

34.5-35

Tall = 6'1"-6'3" (Tall sizes have 2" added to body and sleeve length.)

Short = 5'3"-5'7½" (Short sizes have 2" reduced from body and sleeve length.)

*Arm length refers to your actual arm length, not the garment's sleeve length.

MEN'S BOTTOMS

Numeric Size	28	30	32 M	34	36	38	40 XL
Alpha Size Equivalent	S	32 34	38.5	L		40 42	46.5
Pant Waist	30	40.5		36	38	48.5	
Hip (seat/fullest area)	36.			42.	44.		

area)

5

5

5

WOMEN'S TOPS AND ALPHA-SIZED BOTTOMS

Alpha Size	XS	S	M	L
Bust	32.5-33.5	34.5-35.5	36.5-37.5	39-40.5
Mid Torso (natural waist)	25-26	27-28	29-30	31.5-
Low (fullest area)	35.5-36.5	37.5-38.5	39.5-40.5	33.5 42-
Arm Length (from center back of neck)	30-30.5	30.5-31	31-31.5	43.5

Regular = 5'5"-5'7"

31.5-32

Tall = 5'8"-5'11"

WOMEN'S BOTTOMS (PANTS AND SHORTS)

Numeric Size	0	2	4	6	8	10 M
Alpha Size Equivalent	XS		S		29 30	35 36
Natural Waist (mid-torso)	25 26	31 32	27	28	39.5 40.5	
Pant Waist	35.5	36.5	33	34		
Hip (seat/fullest area)			37.	38.		

area)

5

5

	XL	2XL	3XL	4XL	5XL	6XL
	17-17.5	18 -18	19-19.5	20	21-21.5	22-22.5
	46-48	.5 50-	54-56	-20.5	62-64	66-68
	38-40	52 42- 4	46-48	58-60	54-56	58-60
	35.25 - 35.75	4 36	36.75-37.25	50-52	38.25 - 38.75	39 - 39.5
		-36.5		37.5-38		

	4244 2XL	4648 3XL	5052 4XL	5456 5XL	5860 6XL
	4446 50.5	4850 54.5	5254 58.5	5658 62.5	6062 66.5
	52.5	56.5	60.5	64.5	68.5

PLUS SIZES

	XL	2XL	1X / 16W	2X / 20W	3X / 24W	4X / 28W
	42.5 - 4	4 6.5 - 4	43-45	47- 49	51- 5 3	55-57
	4.5 35.5 -	8.5 40-42	3 9.5 - 41.5	4 3.5 - 4 5.5	47.5-49.5	5 1.5 - 5 3.5
	37.5 4	49.5 - 5	47- 49	51- 5 3	55-57	59 - 61
	5.5 - 47.5	1.5 32.5-	32-32.5	32.5-33	33-33.5	33.5 -34
	32-32.5	33				

	12	14	1618 XL	2022 2XL	2426 1X
	L		35.5 37.5 40.5	4042 44.5 46.5	4446 48.5
	31.	33.	42.5 45.5 47.5	49.5 51.5	50.5 53.5
	5	5			55.5
	37.	38.			

5 42

5

43.

5

5.11® OPS CENTER

3201 N. Airport Way
Manteca, CA 95336

GLOBAL INNOVATION CENTER

3150 Bristol Street, 3rd Floor
Costa Mesa, CA 92626

511TACTICAL.COM

866.451.1726



Scan for weartest or visit:
511Tactical.com/public-safety.html